

**WISDOM**



**PRODUCT  
TECHNICAL DATA SHEET**



## 01 Cordless Headlamp

Wise Lite 2 MSHA Certified Explosion-proof	01
Wisdom Lamp 3 UL & CSA Class I Div 1 Certified Explosion-proof	02
Wisdom Lamp 3 ATEX ib Gb Certified Explosion-proof	03
Wisdom Lamp 3 CE Electrical Safety Certified	04
Wisdom Lamp 3 Plus CE Electrical Safety Certified	05
Wisdom Lamp 4 UL & CE Electrical Safety Certified	06
Wisdom Lamp 6 ATEX & IECEx & ANZEx ia Ma Certified Explosion-proof	07

## 02 Corded Cap Lamp

KL5M MSHA Certified Explosion-proof	08
KL8M MSHA Certified Explosion-proof	09
KL12M MSHA Certified Explosion-proof	10
KL5M ATEX & IECEx ia Ma Certified Explosion-proof	11
KL6M ATEX & IECEx ia Ma Certified Explosion-proof	12
KL8M ATEX & IECEx ia Ma Certified Explosion-proof	13
KL9M ATEX & IECEx ia Ma Certified Explosion-proof	14
KL12M ATEX & IECEx ia Ma Certified Explosion-proof	15
KL13M ATEX & IECEx ia Ma Certified Explosion-proof	16
KL5M CE Electrical Safety Certified	17
KL6M CE Electrical Safety Certified	18
KL8M CE Electrical Safety Certified	19
KL9M CE Electrical Safety Certified	20
KL12M CE Electrical Safety Certified	21
KL13M CE Electrical Safety Certified	22

## 03 Flashlight

Wisdom Aurora Pro UL & CSA Class I Div 1 Certified Explosion-proof	23
--	----

## 04 Personal Safety Strobe Light

Pharos 7 CE Electrical Safety Certified	24
Duplex CE Electrical Safety Certified	25

<b>05</b>	<b>Industrial Safety Headlamp</b>	
	Wisdom ELF CE Electrical Safety Certified	<b>26</b>
<b>06</b>	<b>Hard Hat</b>	
	Helipad Full Brim Type I Class G with Front and Rear Holders	<b>27</b>
	Helipad Full Brim Type I Class G with Front Holder	<b>28</b>
<b>07</b>	<b>Panel Light</b>	
	Wisdom Panel Light	<b>29</b>
<b>08</b>	<b>Portable Single Charger</b>	
	NWB-30 4.8V Fast-fill Portable Single Charger for Cordless Headlamp	<b>30</b>
	NWB-30 6.8V Fast-fill Portable Single Charger for Cordless Headlamp	<b>31</b>
	NWB-50 4.8V Fast-fill Portable Single Charger for Cordless Headlamp	<b>32</b>
	NWB-50 6.8V Fast-fill Portable Single Charger for Cordless Headlamp	<b>33</b>
	NWB-20 Portable Single Charger for Corded Cap Lamp	<b>34</b>
	NWB-25A Fast-fill Portable Single Charger for Corded Cap Lamp	<b>35</b>
	NWB-30A Fast-fill Portable Single Charger for Corded Cap Lamp	<b>36</b>
	NWB-30B Fast-fill Portable Single Charger for Corded Cap Lamp	<b>37</b>
	NWB-45A Fast-fill Portable Single Charger for Corded Cap Lamp	<b>38</b>
	NWF-50A Fast-fill Portable Single Charger for Flashlight	<b>39</b>
<b>09</b>	<b>Charging Rack for Cordless Headlamp</b>	
	NWCR-5B Fast-fill Desktop & Wall-mounted	<b>40</b>
	NWCR-12BL Fast-fill Double Sided Lockable	<b>41</b>
	NWCR-24BL Fast-fill Double Sided Lockable	<b>42</b>
	NWCR-36BL Fast-fill Double Sided Lockable	<b>43</b>
	NWCR-60BL Fast-fill Single Sided Lockable	<b>44</b>
	NWCR-120BL Fast-fill Double Sided Lockable	<b>45</b>
	NWCR-204BL Fast-fill Double Sided Lockable	<b>46</b>
	NWCR-12B Fast-fill Double Sided	<b>47</b>
	NWCR-24B Fast-fill Double Sided	<b>48</b>
	NWCR-36B Fast-fill Double Sided	<b>49</b>
	NWCR-60B Fast-fill Single Sided	<b>50</b>

---

NWCR-120B Fast-fill Double Sided	51
----------------------------------	----

NWCR-204B Fast-fill Double Sided	52
----------------------------------	----

## 10 Charging Rack for Corded Cap Lamp

---

NWCR-12 Double Sided	53
----------------------	----

NWCR-24 Double Sided	54
----------------------	----

NWCR-30 Single Sided	55
----------------------	----

NWCR-60 Double Sided	56
----------------------	----

NWCR-102 Double Sided	57
-----------------------	----

NWCR-12A Fast-fill Double Sided	58
---------------------------------	----

NWCR-24A Fast-fill Double Sided	59
---------------------------------	----

NWCR-30A Fast-fill Single Sided	60
---------------------------------	----

NWCR-36A Fast-fill Double Sided	61
---------------------------------	----

NWCR-50A Fast-fill Single Sided	62
---------------------------------	----

NWCR-60A Fast-fill Double Sided	63
---------------------------------	----

NWCR-100A Fast-fill Double Sided	64
----------------------------------	----

NWCR-102A Fast-fill Double Sided	65
----------------------------------	----

NWCR-170A Fast-fill Double Sided	66
----------------------------------	----

## 11 Charging Rack for Flashlight

---

NWFR-5A Fast-fill Desktop & Wall-mounted	67
--	----

## 12 Charging Rack for Personal Safety Strobe Light & Industrial Safety Headlamp

---

NWBR-8A Fast-fill Desktop	68
---------------------------	----

NWBR-144A Fast-fill Single Sided	69
----------------------------------	----

---



# Wise Lite 2

SKU # CKC314

MSHA Certified Explosion-proof LED Headlamp  
Intended for Use in Coal Mine in North America



## Specifications

Length 3.311" (84.1 mm) \* Width 2.700" (68.6 mm) \* Depth 1.960" (49.8 mm)

0.37 lbs (184 g)

Polycarbonate material

## Features

Hermetically sealed compliance with IP69

Tolerance of torture and impact

Rotatable and mountable clip onto helmet

Rechargeable appliance with Panasonic 7,000 mAh, 1,200 charge cycles Li-ion batteries

100,000 hours life span Cree LED source

Two operating modes

Ambient temperature from -4°F (-20°C) to 140°F (60°C)

6.5 hours charge time upon 5V input

167 lumens (or 8,500 Lux) and 16 hours long lasting in high brightness mode

203 yards (or 185 meters) illuminating range

140-degree illuminating angle

S.O.S effect



# Wisdom Lamp 3

SKU # CKC278

UL & CSA Class I Div 1 Certified Explosion-proof LED Headlamp

Intended for Use in Potentially Explosive Gas Atmospheres except Coal Mine in NA



## Specifications

Length 3.311" (84.1 mm) \* Width 2.700" (68.6 mm) \* Depth 1.960" (49.8 mm)

0.37 lbs (184 g)

Polycarbonate material

## Features

Hermetically sealed compliance with IP69

Tolerance of torture and impact

Rotatable and mountable clip onto helmet

Rechargeable appliance with Panasonic 7,000 mAh, 1,200 charge cycles Li-ion batteries

100,000 hours life span Cree LED source

Two operating modes

Ambient temperature from -4°F (-20°C) to 104°F (40°C)

5 hours charge time upon 5V input

240 lumens (or 11,000 Lux) and 13 hours long lasting in high brightness mode

230 yards (or 210 meters) illuminating range

120-degree illuminating angle

S.O.S effect

Comply with standard UL 913 & CSA C22.2 No. 157-92



I.S. Exi, CL I, Div.1, Grps C and D, T4  
-20°C ≤ Ta ≤ 40°C



801112





# Wisdom Lamp 3 SKU # CKC182

ATEX ib Gb Certified Explosion-proof LED Headlamp

Intended for Use in Potentially Explosive Gas Atmospheres except Coal Mine in EU



## Specifications

Length 3.311" (84.1 mm) \* Width 2.700" (68.6 mm) \* Depth 1.960" (49.8 mm)

0.37 lbs (184 g)

Polycarbonate material

## Features

Hermetically sealed compliance with IP69

Tolerance of torture and impact

Rotatable and mountable clip onto helmet

Rechargeable appliance with Panasonic 7,000 mAh, 1,200 charge cycles Li-ion batteries

100,000 hours life span Cree LED source

Two operating modes

Ambient temperature from -4°F (-20°C) to 104°F (40°C)

5 hours charge time upon 5V input

240 lumens (or 11,000 Lux) and 13 hours long lasting in high brightness mode

230 yards (or 210 meters) illuminating range

120-degree illuminating angle

S.O.S effect



II 2G Ex ib op is IIB T4 Gb  
-20°C ≤ Ta ≤ 40°C



# Wisdom Lamp 3 SKU # CKC197

CE Electrical Safety Certified LED Headlamp  
Intended for Use in Mine



## Specifications

Length 3.311" (84.1 mm) \* Width 2.700" (68.6 mm) \* Depth 1.960" (49.8 mm)

0.37 lbs (184 g)

Polycarbonate material

## Features

Hermetically sealed compliance with IP69

Tolerance of torture and impact

Rotatable and mountable clip onto helmet

Rechargeable appliance with Panasonic 7,000 mAh, 1,200 charge cycles Li-ion batteries

100,000 hours life span Cree LED source

Two operating modes

Ambient temperature from -4°F (-20°C) to 140°F (60°C)

5 hours charge time upon 5V input

265 lumens (or 12,000 Lux) and 13 hours long lasting in high brightness mode

240 yards (or 220 meters) illuminating range

120-degree illuminating angle

S.O.S effect



# Wisdom Lamp 3 Plus SKU # CKC364

CE Electrical Safety Certified LED Headlamp  
Intended for Use in Mine



## Specifications

Length 3.311" (84.1 mm) \* Width 2.700" (68.6 mm) \* Depth 1.960" (49.8 mm)

0.37 lbs (184 g)

Polycarbonate material

## Features

Hermetically sealed compliance with IP69

Tolerance of torture and impact

Rotatable and mountable clip onto helmet

Rechargeable appliance with Panasonic 7,000 mAh, 1,200 charge cycles Li-ion batteries

100,000 hours life span Cree LED source

Three operating modes

Ambient temperature from -4°F (-20°C) to 140°F (60°C)

5 hours charge time upon 5V input

533 lumens (or 25,000 Lux) and 5 hours lasting in high brightness mode, 60 hours in low mode

346 yards (or 316 meters) illuminating range

120-degree illuminating angle

S.O.S effect



# Wisdom Lamp 4

SKU # CKC209  
UL & CE Electrical Safety Certified LED Headlamp  
Intended for Use in Outdoor Activities

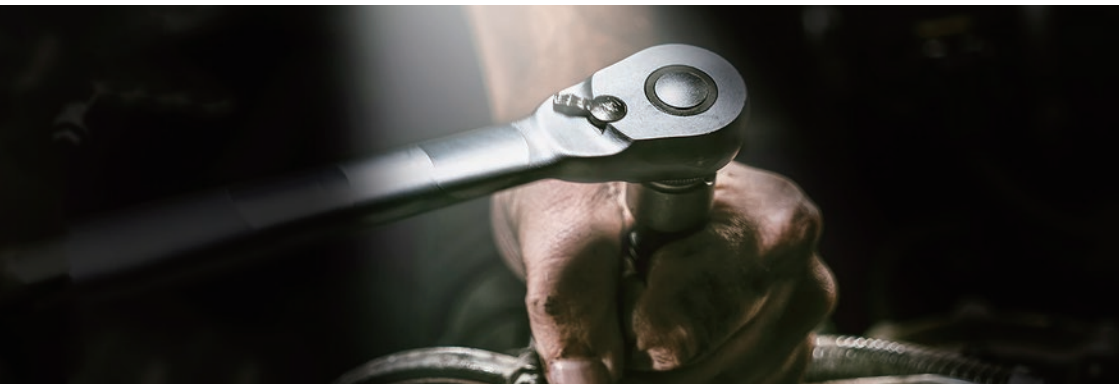


## Specifications

Length 3.311" (84.1 mm) \* Width 2.700" (68.6 mm) \* Depth 1.960" (49.8 mm)  
0.37 lbs (184 g)  
Polycarbonate material

## Features

Hermetically sealed compliance with IP69  
Tolerance of torture and impact  
Rotatable and mountable clip onto helmet  
Rechargeable appliance with Panasonic 7,000 mAh, 1,200 charge cycles Li-ion batteries  
100,000 hours life span Cree LED source  
Three operating modes  
Ambient temperature from -4°F (-20°C) to 140°F (60°C)  
5 hours charge time upon 5V input  
Power bank facility with DC output 5V/2A  
533 lumens (or 25,000 Lux) and 5 hours lasting in high brightness mode, 60 hours in low mode  
346 yards (or 316 meters) illuminating range  
120-degree illuminating angle  
S.O.S effect



# Wisdom Lamp 6

SKU # CKC179

ATEX & IECEx & ANZEx ia Ma Certified Explosion-proof LED Headlamp  
Intended for Use in Coal Mine



## Specifications

Length 3.311" (84.1 mm) \* Width 2.700" (68.6 mm) \* Depth 1.960" (49.8 mm)

0.37 lbs (184 g)

Polycarbonate material

## Features

Hermetically sealed compliance with IP69

Tolerance of torture and impact

Rotatable and mountable clip onto helmet

Rechargeable appliance with Panasonic 7,000 mAh, 1,200 charge cycles Li-ion batteries

100,000 hours life span Cree LED source

Two operating modes

Ambient temperature from 32°F (0°C) to 104°F (40°C)

5.5 hours charge time upon a dedicated charger provided by WISDOM, with output of 6.8Vdc

240 lumens (or 11,000 Lux) and 13 hours long lasting in high brightness mode

230 yards (or 210 meters) illuminating range

120-degree illuminating angle

S.O.S effect



I M1 Ex ia I Ma EN 60079-35-1  
(0°C ≤ T<sub>a</sub> ≤ 40°C)

ANZEx



Ex ia I Ma IEC 60079-35-1  
(0°C ≤ T<sub>a</sub> ≤ 40°C)





**KL5M** SKU # CKL321

MSHA Certified Explosion-proof LED Cap Lamp  
Intended for Use in Coal Mine in North America



## Specifications

Lamp Width 2.952" (75 mm) \* Depth 2.913" (74 mm) \* Height 3.031" (77 mm)

Battery Width 3.692" (93.8 mm) \* Depth 1.507" (38.3 mm) \* Height 3.464" (88 mm)

1.09 lbs (495 g)

Polycarbonate material

## Features

Hermetically sealed compliance with IP69

Tolerance of torture and impact

Mountable clip onto helmet

Rechargeable appliance with Panasonic 8,700 mAh, 1,200 charge cycles Li-ion batteries

100,000 hours life span Cree LED source

Two operating modes

Ambient temperature from -4°F (-20°C) to 140°F (60°C)

6.5 hours charge time upon a dedicated charger provided by WISDOM, with output of 4.2Vdc

279 lumens (or 20,000 Lux) and 16 hours long lasting in high brightness mode

310 yards (or 283 meters) illuminating range

120-degree illuminating angle

S.O.S effect



# KL8M

SKU # CKL323

MSHA Certified Explosion-proof LED Cap Lamp  
Intended for Use in Coal Mine in North America



## Specifications

Lamp Width 2.952" (75 mm) \* Depth 2.913" (74 mm) \* Height 3.031" (77 mm)

Battery Width 3.692" (93.8 mm) \* Depth 1.507" (38.3 mm) \* Height 4.173" (106 mm)

1.20 lbs (548 g)

Polycarbonate material

## Features

Hermetically sealed compliance with IP69

Tolerance of torture and impact

Mountable clip onto helmet

Rechargeable appliance with Panasonic 11,600 mAh, 1,200 charge cycles Li-ion batteries

100,000 hours life span Cree LED source

Two operating modes

Ambient temperature from -4°F (-20°C) to 140°F (60°C)

8.5 hours charge time upon a dedicated charger provided by WISDOM, with output of 4.2Vdc

279 lumens (or 20,000 Lux) and 20 hours long lasting in high brightness mode

310 yards (or 283 meters) illuminating range

120-degree illuminating angle

S.O.S effect



# KL12M

SKU # CKL326

MSHA Certified Explosion-proof LED Cap Lamp  
Intended for Use in Coal Mine in North America



## Specifications

Lamp Width 2.952" (75 mm) \* Depth 2.913" (74 mm) \* Height 3.031" (77 mm)

Battery Width 3.692" (93.8 mm) \* Depth 1.507" (38.3 mm) \* Height 4.173" (106 mm)

1.20 lbs (548 g)

Polycarbonate materia

## Features

Hermetically sealed compliance with IP69

Tolerance of torture and impact

Mountable clip onto helmet

Rechargeable appliance with Panasonic 14,000 mAh, 1,200 charge cycles Li-ion batteries

100,000 hours life span Cree LED source

Two operating modes

Ambient temperature from -4°F (-20°C) to 140°F (60°C)

6.5 hours charge time upon a dedicated charger provided by WISDOM, with output of 4.56Vdc

279 lumens (or 20,000 Lux) and 24 hours long lasting in high brightness mode

310 yards (or 283 meters) illuminating range

120-degree illuminating angle

S.O.S effect





**KL5M** SKU # CKL355

**ATEX & IECEx ia Ma Certified Explosion-proof LED Cap Lamp  
Intended for Use in Coal Mine**



## Specifications

Lamp Width 2.952" (75 mm) \* Depth 2.913" (74 mm) \* Height 3.031" (77 mm)

Battery Width 3.692" (93.8 mm) \* Depth 1.507" (38.3 mm) \* Height 3.464" (88 mm)

1.09 lbs (495 g)

Polycarbonate material

## Features

Hermetically sealed compliance with IP69

Tolerance of torture and impact

Mountable clip onto helmet

Rechargeable appliance with Panasonic 7,800 mAh, 1,200 charge cycles Li-ion batteries

100,000 hours life span Cree LED source

Two operating modes

Ambient temperature from 32°F (0°C) to 104°F (40°C)

6.5 hours charge time upon a dedicated charger provided by WISDOM, with output of 4.2Vdc

340 lumens (or 24,000 Lux) and 13 hours long lasting in high brightness mode

340 yards (or 310 meters) illuminating range

120-degree illuminating angle

S.O.S effect



**I M1 Ex ia I Ma EN 60079-35-1**  
(0°C ≤ Ta ≤ 40°C)



**Ex ia I Ma IEC 60079-35-1**  
(0°C ≤ Ta ≤ 40°C)



**KL6M** SKU # CKL432

ATEX & IECEx ia Ma Certified Explosion-proof LED Cap Lamp  
Intended for Use in Coal Mine



## Specifications

Lamp Width 2.755" (70 mm) \* Depth 2.913" (74 mm) \* Height 3.031" (77 mm)

Battery Width 3.692" (93.8 mm) \* Depth 1.507" (38.3 mm) \* Height 3.464" (88 mm)

1.09 lbs (495 g)

Polycarbonate material

## Features

Hermetically sealed compliance with IP69

Tolerance of torture and impact

Mountable clip onto helmet

Rechargeable appliance with Panasonic 7,800 mAh, 1,200 charge cycles Li-ion batteries

100,000 hours life span Cree LED source

Two operating modes

Ambient temperature from 32°F (0°C) to 104°F (40°C)

6.5 hours charge time upon a dedicated charger provided by WISDOM, with output of 4.2Vdc

340 lumens (or 24,000 Lux) and 13 hours long lasting in high brightness mode

340 yards (or 310 meters) illuminating range

120-degree illuminating angle

S.O.S effect



IM1 Ex ia I Ma EN 60079-35-1  
(0°C ≤ T<sub>a</sub> ≤ 40°C)



Ex ia I Ma IEC 60079-35-1  
(0°C ≤ T<sub>a</sub> ≤ 40°C)



**KL8M** SKU # CKL307

**ATEX & IECEx ia Ma Certified Explosion-proof LED Cap Lamp  
Intended for Use in Coal Mine**



## Specifications

Lamp Width 2.952" (75 mm) \* Depth 2.913" (74 mm) \* Height 3.031" (77 mm)

Battery Width 3.692" (93.8 mm) \* Depth 1.507" (38.3 mm) \* Height 4.173" (106 mm)

1.20 lbs (548 g)

Polycarbonate material

## Features

Hermetically sealed compliance with IP69

Tolerance of torture and impact

Mountable clip onto helmet

Rechargeable appliance with Panasonic 10,400 mAh, 1,200 charge cycles Li-ion batteries

100,000 hours life span Cree LED source

Two operating modes

Ambient temperature from 32°F (0°C) to 104°F (40°C)

8.5 hours charge time upon a dedicated charger provided by WISDOM, with output of 4.2Vdc

430 lumens (or 30,000 Lux) and 13 hours long lasting in high brightness mode

378 yards (or 346 meters) illuminating range

120-degree illuminating angle

S.O.S effect



**I M1 Ex ia I Ma EN 60079-35-1**  
(0°C ≤ Ta ≤ 40°C)



**Ex ia I Ma IEC 60079-35-1**  
(0°C ≤ Ta ≤ 40°C)



**KL9M** SKU # CKL433

ATEX & IECEx ia Ma Certified Explosion-proof LED Cap Lamp  
Intended for Use in Coal Mine



## Specifications

Lamp Width 2.755" (70 mm) \* Depth 2.913" (74 mm) \* Height 3.031" (77 mm)

Battery Width 3.692" (93.8 mm) \* Depth 1.507" (38.3 mm) \* Height 4.173" (106 mm)

1.20 lbs (548 g)

Polycarbonate material

## Features

Hermetically sealed compliance with IP69

Tolerance of torture and impact

Mountable clip onto helmet

Rechargeable appliance with Panasonic 10,400 mAh, 1,200 charge cycles Li-ion batteries

100,000 hours life span Cree LED source

Two operating modes

Ambient temperature from 32°F (0°C) to 104°F (40°C)

8.5 hours charge time upon a dedicated charger provided by WISDOM, with output of 4.2Vdc

430 lumens (or 30,000 Lux) and 13 hours long lasting in high brightness mode

378 yards (or 346 meters) illuminating range

120-degree illuminating angle

S.O.S effect



I M1 Ex ia I Ma EN 60079-35-1  
(0°C ≤ T<sub>a</sub> ≤ 40°C)



Ex ia I Ma IEC 60079-35-1  
(0°C ≤ T<sub>a</sub> ≤ 40°C)





# KL12M

SKU # CKL308

ATEX & IECEx ia Ma Certified Explosion-proof LED Cap Lamp  
Intended for Use in Coal Mine



## Specifications

Lamp Width 2.952" (75 mm) \* Depth 2.913" (74 mm) \* Height 3.031" (77 mm)

Battery Width 3.692" (93.8 mm) \* Depth 1.507" (38.3 mm) \* Height 4.173" (106 mm)

1.20 lbs (548 g)

Polycarbonate material

## Features

Hermetically sealed compliance with IP69

Tolerance of torture and impact

Mountable clip onto helmet

Rechargeable appliance with Panasonic 14,000 mAh, 1,200 charge cycles Li-ion batteries

100,000 hours life span Cree LED source

Two operating modes

Ambient temperature from 32°F (0°C) to 104°F (40°C)

10 hours charge time upon a dedicated charger provided by WISDOM, with output of 4.2Vdc

512 lumens (or 35,000 Lux) and 13 hours long lasting in high brightness mode

404 yards (or 369 meters) illuminating range

120-degree illuminating angle

S.O.S effect



IM1 Ex ia I Ma EN 60079-35-1  
(0°C ≤ Ta ≤ 40°C)



Ex ia I Ma IEC 60079-35-1  
(0°C ≤ Ta ≤ 40°C)



# KL13M

SKU # CKL434

ATEX & IECEx ia Ma Certified Explosion-proof LED Cap Lamp  
Intended for Use in Coal Mine



## Specifications

Lamp Width 2.755" (70 mm) \* Depth 2.913" (74 mm) \* Height 3.031" (77 mm)

Battery Width 3.692" (93.8 mm) \* Depth 1.507" (38.3 mm) \* Height 4.173" (106 mm)

1.20 lbs (548 g)

Polycarbonate material

## Features

Hermetically sealed compliance with IP69

Tolerance of torture and impact

Mountable clip onto helmet

Rechargeable appliance with Panasonic 14,000 mAh, 1,200 charge cycles Li-ion batteries

100,000 hours life span Cree LED source

Two operating modes

Ambient temperature from 32°F (0°C) to 104°F (40°C)

10 hours charge time upon a dedicated charger provided by WISDOM, with output of 4.2Vdc

512 lumens (or 35,000 Lux) and 13 hours long lasting in high brightness mode

404 yards (or 369 meters) illuminating range

120-degree illuminating angle

S.O.S effect



IM1 Ex ia I Ma EN 60079-35-1  
(0°C ≤ Ta ≤ 40°C)



Ex ia I Ma IEC 60079-35-1  
(0°C ≤ Ta ≤ 40°C)



# KL5M

SKU # CKL364

CE Electrical Safety Certified LED Cap Lamp  
Intended for Use in Mine



## Specifications

Lamp Width 2.952" (75 mm) \* Depth 2.913" (74 mm) \* Height 3.031" (77 mm)

Battery Width 3.692" (93.8 mm) \* Depth 1.507" (38.3 mm) \* Height 3.464" (88 mm)

1.09 lbs (495 g)

Polycarbonate material

## Features

Hermetically sealed compliance with IP69

Tolerance of torture and impact

Mountable clip onto helmet

Rechargeable appliance with Panasonic 7,800 mAh, 1,200 charge cycles Li-ion batteries

100,000 hours life span Cree LED source

Two operating modes

Ambient temperature from -4°F (-20°C) to 140°F (60°C)

6.5 hours charge time upon a dedicated charger provided by WISDOM, with output of 4.2Vdc

340 lumens (or 24,000 Lux) and 13 hours long lasting in high brightness mode

340 yards (or 310 meters) illuminating range

120-degree illuminating angle

S.O.S effect



# KL6M

SKU # CKL383

CE Electrical Safety Certified LED Cap Lamp  
Intended for Use in Mine



## Specifications

Lamp Width 2.755" (70 mm) \* Depth 2.913" (74 mm) \* Height 3.031" (77 mm)

Battery Width 3.692" (93.8 mm) \* Depth 1.507" (38.3 mm) \* Height 3.464" (88 mm)

1.09 lbs (495 g)

Polycarbonate material

## Features

Hermetically sealed compliance with IP69

Tolerance of torture and impact

Mountable clip onto helmet

Rechargeable appliance with Panasonic 7,800 mAh, 1,200 charge cycles Li-ion batteries

100,000 hours life span Cree LED source

Two operating modes

Ambient temperature from -4°F (-20°C) to 140°F (60°C)

3 hours charge time upon a dedicated charger provided by WISDOM, with output of 4.65Vdc

340 lumens (or 24,000 Lux) and 13 hours long lasting in high brightness mode

340 yards (or 310 meters) illuminating range

120-degree illuminating angle

S.O.S effect





# KL8M

SKU # CKL365

CE Electrical Safety Certified LED Cap Lamp  
Intended for Use in Mine



## Specifications

Lamp Width 2.952" (75 mm) \* Depth 2.913" (74 mm) \* Height 3.031" (77 mm)

Battery Width 3.692" (93.8 mm) \* Depth 1.507" (38.3 mm) \* Height 4.173" (106 mm)

1.20 lbs (548 g)

Polycarbonate material

## Features

Hermetically sealed compliance with IP69

Tolerance of torture and impact

Mountable clip onto helmet

Rechargeable appliance with Panasonic 10,400 mAh, 1,200 charge cycles Li-ion batteries

100,000 hours life span Cree LED source

Two operating modes

Ambient temperature from -4°F (-20°C) to 140°F (60°C)

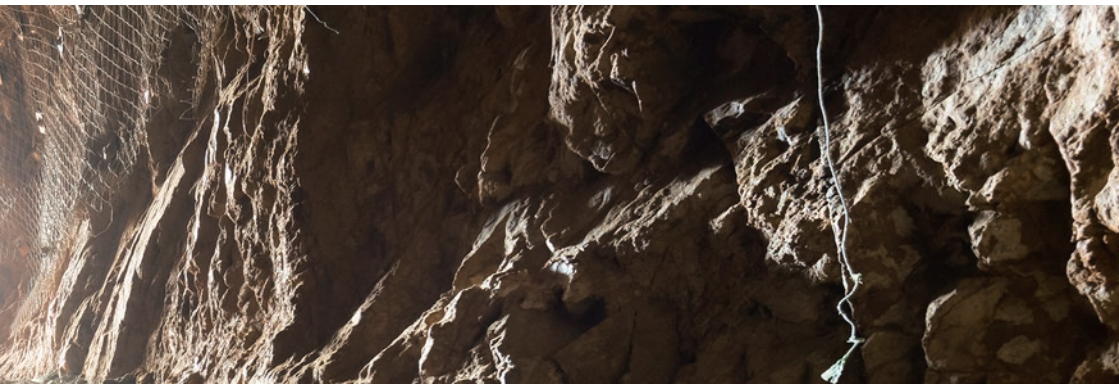
8.5 hours charge time upon a dedicated charger provided by WISDOM, with output of 4.2Vdc

430 lumens (or 30,000 Lux) and 13 hours long lasting in high brightness mode

378 yards (or 346 meters) illuminating range

120-degree illuminating angle

S.O.S effect



# KL9M

SKU # CKL382

CE Electrical Safety Certified LED Cap Lamp

Intended for Use in Mine



## Specifications

Lamp Width 2.755" (70 mm) \* Depth 2.913" (74 mm) \* Height 3.031" (77 mm)

Battery Width 3.692" (93.8 mm) \* Depth 1.507" (38.3 mm) \* Height 4.173" (106 mm)

1.20 lbs (548 g)

Polycarbonate material

## Features

Hermetically sealed compliance with IP69

Tolerance of torture and impact

Mountable clip onto helmet

Rechargeable appliance with Panasonic 10,400 mAh, 1,200 charge cycles Li-ion batteries

100,000 hours life span Cree LED source

Two operating modes

Ambient temperature from -4°F (-20°C) to 140°F (60°C)

4.5 hours charge time upon a dedicated charger provided by WISDOM, with output of 4.65Vdc

430 lumens (or 30,000 Lux) and 13 hours long lasting in high brightness mode

378 yards (or 346 meters) illuminating range

120-degree illuminating angle

S.O.S effect



# KL12M

SKU # CKL353

CE Electrical Safety Certified LED Cap Lamp  
Intended for Use in Mine



## Specifications

Lamp Width 2.952" (75 mm) \* Depth 2.913" (74 mm) \* Height 3.031" (77 mm)

Battery Width 3.692" (93.8 mm) \* Depth 1.507" (38.3 mm) \* Height 4.173" (106 mm)

1.20 lbs (548 g)

Polycarbonate material

## Features

Hermetically sealed compliance with IP69

Tolerance of torture and impact

Mountable clip onto helmet

Rechargeable appliance with Panasonic 14,000 mAh, 1,200 charge cycles Li-ion batteries

100,000 hours life span Cree LED source

Two operating modes

Ambient temperature from -4°F (-20°C) to 140°F (60°C)

6.5 hours charge time upon a dedicated charger provided by WISDOM, with output of 4.56Vdc

512 lumens (or 35,000 Lux) and 13 hours long lasting in high brightness mode

415 yards (or 369 meters) illuminating range

120-degree illuminating angle

S.O.S effect



**KL13M** SKU # CKL381

CE Electrical Safety Certified LED Cap Lamp  
Intended for Use in Mine



## Specifications

Lamp Width 2.755" (70 mm) \* Depth 2.913" (74 mm) \* Height 3.031" (77 mm)

Battery Width 3.692" (93.8 mm) \* Depth 1.507" (38.3 mm) \* Height 4.173" (106 mm)

1.20 lbs (548 g)

Polycarbonate material

## Features

Hermetically sealed compliance with IP69

Tolerance of torture and impact

Mountable clip onto helmet

Rechargeable appliance with Panasonic 14,000 mAh, 1,200 charge cycles Li-ion batteries

100,000 hours life span Cree LED source

Two operating modes

Ambient temperature from -4°F (-20°C) to 140°F (60°C)

5.5 hours charge time upon a dedicated charger provided by WISDOM, with output of 4.65Vdc

512 lumens (or 35,000 Lux) and 13 hours long lasting in high brightness mode

404 yards (or 369 meters) illuminating range

120-degree illuminating angle

S.O.S effect





# WISDOM Aurora Pro SKU # CWT012

UL & CSA Class I Div 1 Certified Explosion-proof LED Flashlight

Intended for Use in Potentially Explosive Gas Atmospheres except Coal Mine in NA



## Specifications

Length 7.7" (195.6 mm) \* OD 2.6" (66.1 mm)

1.10 lbs (500 g)

Cold forged aluminum housing with hard anodized finish

## Features

Hermetically sealed compliance with IP69

Tolerance of torture and impact

Rechargeable appliance with Panasonic 14,000 mAh, 1,200 charge cycles Li-ion batteries

100,000 hours life span Cree LED source

237 illumination levels

21W LED output power

Ambient temperature from -4°F (-20°C) to 104°F (40°C)

4 hours charge time upon a dedicated charger provided by WISDOM, with output of 4.2Vdc

3,192 Lumens (or 120,000 Lux) and 4.5 hours working time upon the highest mode setting

Over 300 hours long lasting at the lowest mode setting

2,187 yards (or 2,000 meters) illuminating range

S.O.S effect

Comply with standard UL 913 & CSA C22.2 No. 157-92



I.S. Exi, CL I, Div.1, Grps C and D, T4  
-20°C ≤ Ta ≤ 40°C



# Pharos 7

Personal Safety Strobe Light  
Intended for Use in Mine



## Specifications

Length 2.5" (63 mm) \* Width 1.9" (48 mm) \* Depth 0.6" (15 mm)

0.08 lbs (38 g)

Polycarbonate material

## Features

Hermetically sealed compliance with IP69

Tolerance of torture and impact

Rechargeable appliance with 700 mAh, 500 charge cycles Li-ion battery

Two operating modes

Ambient temperature from -4°F (-20°C) to 140°F (60°C)

2 hours charge time upon 5V input

437 yards (400 meters) visible range

S.O.S effect

## Working Time

- |                                     |  |              |
|-------------------------------------|--|--------------|
| <input type="checkbox"/>            | 9.5 hours on steady, 50 hours on flash | SKU # CKH063 |
| <input checked="" type="checkbox"/> | 9.5 hours on steady, 50 hours on flash | SKU # CKH059 |
| <input checked="" type="checkbox"/> | 9.0 hours on steady, 46 hours on flash | SKU # CKH062 |
| <input checked="" type="checkbox"/> | 9.0 hours on steady, 46 hours on flash | SKU # CKH061 |
| <input checked="" type="checkbox"/> | 9.0 hours on steady, 46 hours on flash | SKU # CKH060 |



**Duplex** SKU # CKH110  
Personal Safety Strobe Light  
Intended for Use in Law Enforcement



## Specifications

Length 2.5" (63 mm) \* Width 1.9" (48 mm) \* Depth 0.6" (15 mm)  
0.08 lbs (38 g)  
Polycarbonate material

## Features

Hermetically sealed compliance with IP69  
Tolerance of torture and impact  
Rechargeable appliance with 700 mAh, 500 charge cycles Li-ion battery  
Two operating modes  
Ambient temperature from -4°F (-20°C) to 140°F (60°C)  
2 hours charge time upon 5V input  
437 yards (400 meters) visible range  
S.O.S effect

## Working Time

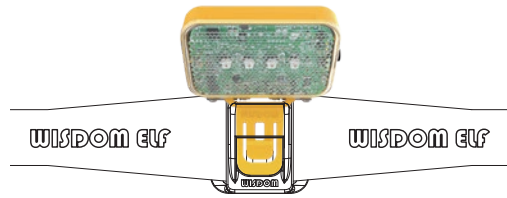
- 9.5 hours on steady
- 43 hours on flash



# WISDOM ELF

SKU # CKH114

CE Electrical Safety Certified LED Headlamp  
Intended for Use in MRO



## Specifications

Length 2.5" (63 mm) \* Width 1.6" (41 mm) \* Depth 0.6" (15 mm)

0.12 lbs (55 g)

Polycarbonate material

## Features

Hermetically sealed compliance with IP69

Tolerance of torture and impact

Rotatable and mountable clip onto Wisdom head strap and hard hat

Rechargeable appliance with 1,500 mAh, 500 charge cycles Li-ion battery

Four operating modes

Ambient temperature from -4°F (-20°C) to 140°F (60°C)

3 hours charge time upon 5V input

315 lumens and 2.5 hours long lasting in high brightness mode

437 yards (400 meters) visible range on flash

S.O.S effect

## Lighting mode

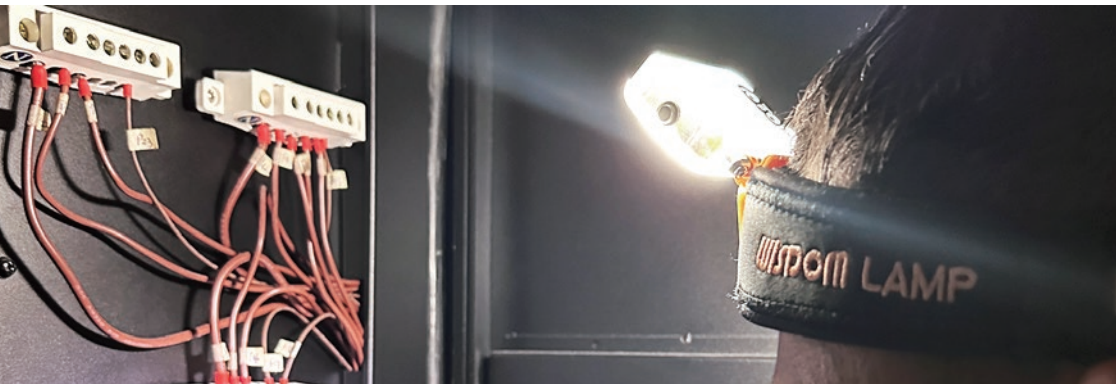
☀ 8.5 hours

☀ 4.5 hours

☀ 2.5 hours

## Flash mode

■ 95 hours





# Helipad

Hard Hat with Front and Rear Holders

ANSI/ISEA Z89.1-2014 Approved Type I Class G

CSA Z94.1-15 (R2024) Approved Type 1 Class G

EN 397:2012+A1:2012 Approved

AS/NZS 1801:1997+A1:1999 Approved Type 1

GB 2811-2019 Approved T JG

SABER Approved



## Specifications

Length 12.4" (315 mm) \* Width 10.63" (270 mm) \* Depth 5.98" (152 mm)

0.82 lbs (370 g)

HDPE material

## Features

Tolerance of torture and impact

Streamlined curved shell surface reducing aerodynamic drag

Full brim preventing face from falling water, dust and sunlight

H-shaped ribs at the apex of shell reinforcing impact-resistant performance

Built-in front holder for headlamp and rear holder for personal safety strobe light or cable

8-point suspension enhancing comfortable fit and security

Adjustable pin-lock headband ranging 53- 64 CM 6 5/8 – 8

Side-slots enabling accessories mounting

## Color

White SKU # CPA002

Red SKU # CPA004

Orange SKU # CPA006

Brown SKU # CPA008

Black SKU # CPA005

Yellow SKU # CPA007

Blue SKU # CPA017

Green SKU # CPA009



# Helipad

Hard Hat with Front Holder

ANSI/ISEA Z89.1-2014 Approved Type I Class G

CSA Z94.1-15 (R2024) Approved Type 1 Class G

EN 397:2012+A1:2012 Approved

AS/NZS 1801:1997+A1:1999 Approved Type 1

GB 2811-2019 Approved T JG

SABER Approved



## Specifications

Length 12.4" (315 mm) \* Width 10.63" (270 mm) \* Depth 5.98" (152 mm)

0.82 lbs (370 g)

HDPE material

## Features

Tolerance of torture and impact

Streamlined curved shell surface reducing aerodynamic drag

Full brim preventing face from falling water, dust and sunlight

H-shaped ribs at the apex of shell reinforcing impact-resistant performance

Built-in front holder for headlamp

8-point suspension enhancing comfortable fit and security

Adjustable pin-lock headband ranging 53- 64 CM 6 5/8 – 8

Side-slots enabling accessories mounting

## Color

White SKU # CPA010

Red SKU # CPA011

Orange SKU # CPA013

Brown SKU # CPA015

Black SKU # CPA012

Yellow SKU # CPA014

Blue SKU # CPA018

Green SKU # CPA016



# Panel Light

SKU # CWM002

FCC & UL & ETL Approved

CE & ERP Approved

CCC Approved



## Specifications

Length 23.74" (603 mm) \* Width 6.02" (153 mm) \* Depth 1.26" (32 mm)

Length 23.74" (603 mm) \* Width 11.93" (303 mm) \* Depth 1.26" (32 mm)

Length 23.74" (603 mm) \* Width 23.74" (603 mm) \* Depth 1.26" (32 mm)

1.83 lbs (830 g)

Polycarbonate material

## Features

Remote dimming

Optional Wi-Fi and Bluetooth control

Honeycomb omni-directional light

AC input of 100-240V  $\pm 10\%$  50-60Hz 40W single phase

Light efficiency of 140 Lm/W

Color temperature 4,000 K

CRI  $\geq 80\%$

Luminous flux 5,400 Lm

Color tolerance  $< 4$

Power factor  $> 0.9$

5-year warranty





# NWB-30 4.8V

SKU # CCD116

Fast-fill Portable Single Charger for Cordless Headlamp

## Specifications

Width 4.488" (114 mm) \* Depth 3.110" (79 mm) \* Height 1.377" (35 mm)

0.32 lbs (148 g)

Polycarbonate material

## Features

Tolerance of torture and impact

Easy-to-view indicator for charging state

Overcharging protection circuit built in

Automatically switch off upon the lamp battery topped up

Easy slide-in design with high-toughness metal shrapnel snapping the headlamp on

AC input of 100-240V  $\pm 10\%$  50-60Hz 0.22A 12W single phase

DC output of 4.8V 2,000mA

6.5 hours charge time with output of 4.8Vdc for Wise Lite 2

5 hours charge time with output of 4.8Vdc for Wisdom Lamp 3

5 hours charge time with output of 4.8Vdc for Wisdom Lamp 4





# NWB-30 6.8V

SKU # CCD090

Fast-fill Portable Single Charger for Cordless Headlamp

## Specifications

Width 4.488" (114 mm) \* Depth 3.110" (79 mm) \* Height 1.377" (35 mm)

0.32 lbs (148 g)

Polycarbonate material

## Features

Tolerance of torture and impact

Easy-to-view indicator for charging state

Overcharging protection circuit built in

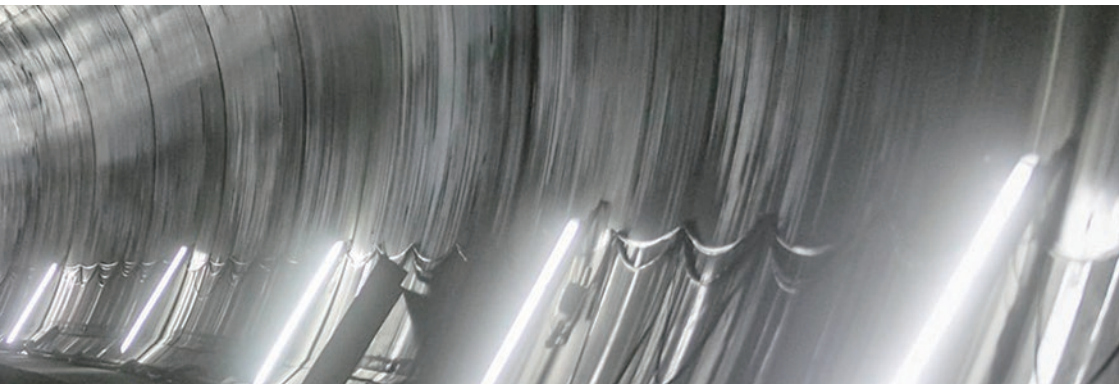
Automatically switch off upon the lamp battery topped up

Easy slide-in design with high-toughness metal shrapnel snapping the headlamp on

AC input of 100-240V  $\pm 10\%$  50-60Hz 0.30A 16W single phase

DC output of 6.8V 2,000mA

5.5 hours charge time with output of 6.8Vdc for Wisdom Lamp 6





# NWB-50 4.8V

Fast-fill Portable Single Charger for Cordless Headlamp



## Specifications

Width 4.488" (114 mm) \* Depth 2.992" (76 mm) \* Height 0.866" (22 mm)

0.29 lbs (132 g)

Polycarbonate material

## Features

Tolerance of torture and impact

Easy-to-view indicator for charging state

Overcharging protection circuit built in

Automatically switch off upon the lamp battery topped up

Easy slide-in design with high-toughness metal shrapnel snapping the headlamp on

AC input of 100-240V  $\pm 10\%$  50-60Hz 0.50A 30W single phase

DC output of 4.8V 5,000mA

2 hours charge time with output of 4.8Vdc for Wise Lite 2

2 hours charge time with output of 4.8Vdc for Wisdom Lamp 3

2 hours charge time with output of 4.8Vdc for Wisdom Lamp 4



# NWB-50 6.8V

Fast-fill Portable Single Charger for Cordless Headlamp



## Specifications

Width 4.488" (114 mm) \* Depth 2.992" (76 mm) \* Height 0.866" (22 mm)

0.29 lbs (132 g)

Polycarbonate material

## Features

Tolerance of torture and impact

Easy-to-view indicator for charging state

Overcharging protection circuit built in

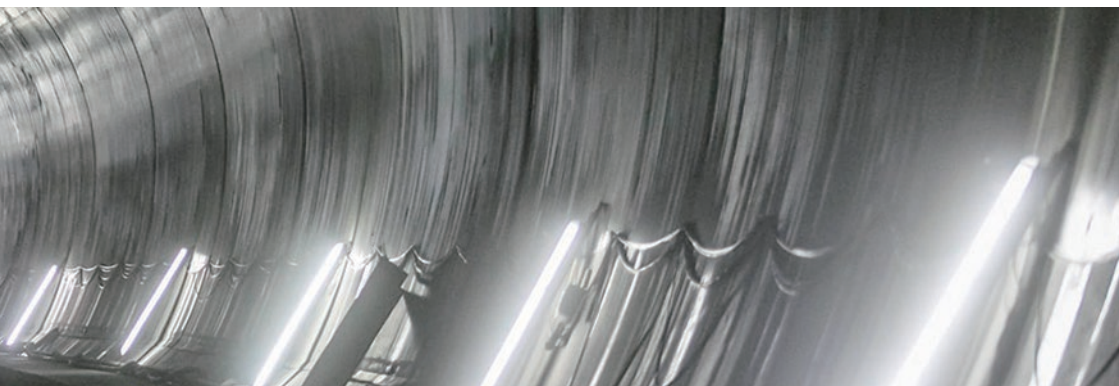
Automatically switch off upon the lamp battery topped up

Easy slide-in design with high-toughness metal shrapnel snapping the headlamp on

AC input of 100-240V  $\pm 10\%$  50-60Hz 0.71A 43W single phase

DC output of 6.8V 5,000mA

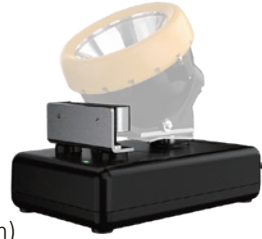
2.5 hours charge time with output of 6.8Vdc for Wisdom Lamp 6



# NWB-20

SKU # CCD112

Portable Single Charger for Corded Cap Lamp



## Specifications

Width 4.488" (114 mm) \* Depth 2.992" (76 mm) \* Height 2.047" (52 mm)

0.42 lbs (192 g)

Polycarbonate material

## Features

Tolerance of torture and impact

Easy-to-view indicator for charging state

Overcharging protection circuit built in

Automatically switch off upon the lamp battery topped up

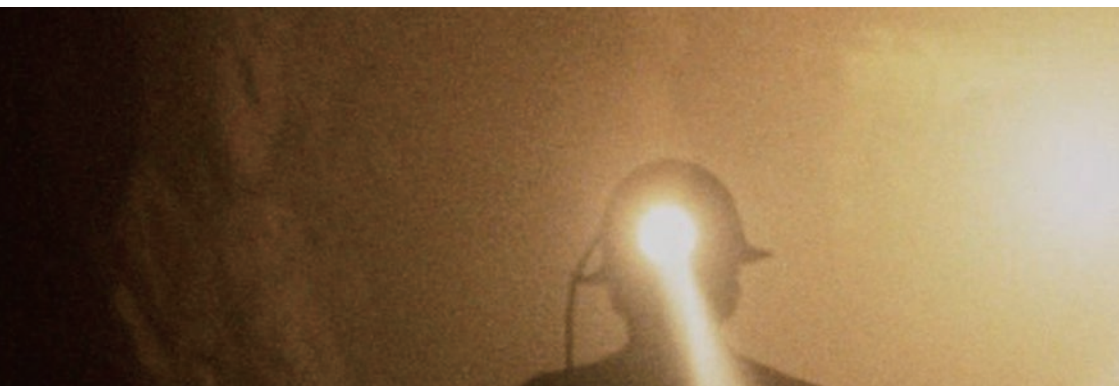
High-toughness metal shrapnel snapping the headpiece on

AC input of 100-240V  $\pm 10\%$  50-60Hz 0.24A 12W single phase

DC output of 4.2V 2,000mA

6.5 hours charge time with output of 4.2Vdc for Wisdom KL5M

8.5 hours charge time with output of 4.2Vdc for Wisdom KL8M

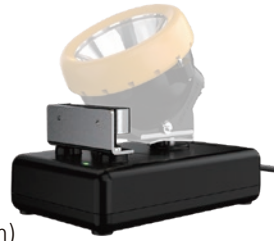




# NWB-25A

SKU # CCD063

Fast-fill Portable Single Charger for Corded Cap Lamp



## Specifications

Width 4.566" (116 mm) \* Depth 2.992" (76 mm) \* Height 2.047" (52 mm)

0.44 lbs (202 g)

Polycarbonate material

## Features

Tolerance of torture and impact

Easy-to-view indicator for charging state

Overcharging protection circuit built in

Automatically switch off upon the lamp battery topped up

High-toughness metal shrapnel snapping the headpiece on

AC input of 100-240V  $\pm 10\%$  50-60Hz 0.30A 15W single phase

DC output of 4.56V 2,400mA

4 hours charge time with output of 4.56Vdc for Wisdom KL5M

5.5 hours charge time with output of 4.56Vdc for Wisdom KL8M

6.5 hours charge time with output of 4.56Vdc for Wisdom KL12M



# NWB-30A

Fast-fill Portable Single Charger for Corded Cap Lamp



## Specifications

Width 4.488" (114 mm) \* Depth 2.992" (76 mm) \* Height 0.787" (20 mm)

0.29 lbs (132 g)

Polycarbonate material

## Features

Tolerance of torture and impact

Easy-to-view indicator for charging state

Overcharging protection circuit built in

Automatically switch off upon the lamp battery topped up

Easy slide-in design with high-toughness metal shrapnel snapping the headpiece on

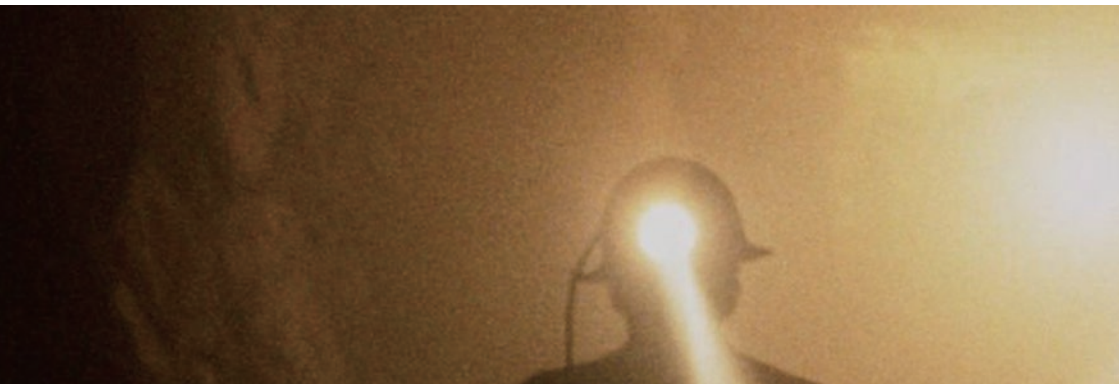
AC input of 100-240V  $\pm 10\%$  50-60Hz 0.30A 17W single phase

DC output of 4.65V 3,000mA

3 hours charge time with output of 4.65Vdc for Wisdom KL6M

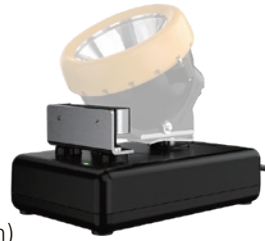
4.5 hours charge time with output of 4.65Vdc for Wisdom KL9M

5.5 hours charge time with output of 4.65Vdc for Wisdom KL13M



# NWB-30B

Fast-fill Portable Single Charger for Corded Cap Lamp



## Specifications

Width 4.566" (116 mm) \* Depth 2.992" (76 mm) \* Height 2.047" (52 mm)

0.44 lbs (202 g)

Polycarbonate material

## Features

Tolerance of torture and impact

Easy-to-view indicator for charging state

Overcharging protection circuit built in

Automatically switch off upon the lamp battery topped up

High-toughness metal shrapnel snapping the headpiece on

AC input of 100-240V  $\pm 10\%$  50-60Hz 0.30A 17W single phase

DC output of 4.65V 3,000mA

3 hours charge time with output of 4.65Vdc for Wisdom KL5M

4.5 hours charge time with output of 4.65Vdc for Wisdom KL8M

5.5 hours charge time with output of 4.65Vdc for Wisdom KL12M



# NWB-45A

SKU # CCD120

Fast-fill Portable Single Charger for Corded Cap Lamp



## Specifications

Width 4.488" (114 mm) \* Depth 2.992" (76 mm) \* Height 0.787" (20 mm)

0.29 lbs (132 g)

Polycarbonate material

## Features

Tolerance of torture and impact

Easy-to-view indicator for charging state

Overcharging protection circuit built in

Automatically switch off upon the lamp battery topped up

Easy slide-in design with high-toughness metal shrapnel snapping the headpiece on

AC input of 100-240V  $\pm 10\%$  50-60Hz 0.46A 26W single phase

DC output of 4.65V 4,500mA

2 hours charge time with output of 4.65Vdc for Wisdom KL6M

2.5 hours charge time with output of 4.65Vdc for Wisdom KL9M

4 hours charge time with output of 4.65Vdc for Wisdom KL13M



# NWB-50A

SKU # CCD123

Fast-fill Portable Single Charger for Flashlight

## Specifications

Width 4.449" (113 mm) \* Depth 2.992" (76 mm) \* Height 0.787" (20 mm)

0.27 lbs (121 g)

Polycarbonate material



## Features

Tolerance of torture and impact

Easy-to-view indicator for charging state

Overcharging protection circuit built in

Automatically switch off upon the lamp battery topped up

Easy plug-in design with high-toughness metal shrapnel snapping the flashlight on

AC input of 100-240V  $\pm 10\%$  50-60Hz 0.49A 25.6W single phase

DC output of 4.2V 5,000mA

3 hours charge time with output of 4.2Vdc for Wisdom Aurora Pro





# NWCR-5B

SKU # CCJ262

Fast-fill Desktop & Wall-mounted Charging Rack  
for Cordless Headlamp



## Specifications

Width 18.543" (471 mm) \* Depth 7.087" (180 mm) \* Height 2.244" (57 mm)

6.61 lbs (3 Kg)

Cold-formed steel material

## Features

Desktop & wall-mounted unit with 5 individual outlets

Scratch-resisting electrostatic spray coating

Easy-to-view indicator for charging state

Overcharging protection circuit built in

Automatically switch off upon the lamp battery topped up

High-efficiency heat dissipation construction

Easy slide-in design with high-toughness metal shrapnel snapping the cordless headlamp on

AC input of 100-240V  $\pm 10\%$  50-60Hz 1.10/1.50A 60/80W single phase

DC output of 4.8/6.8V 2,000mA in each outlet

6.5 hours charge time with output of 4.8Vdc for Wise Lite 2

5 hours charge time with output of 4.8Vdc for Wisdom Lamp 3 / 4

5.5 hours charge time with output of 6.8Vdc for Wisdom Lamp 6



# NWCR-12BL

SKU # CCJ224

Fast-fill Double Sided Charging Rack for Cordless Headlamp



## Specifications

Width 11.81" (300 mm) \* Depth 9.13" (232 mm) \* Height 39.37" (1,000 mm)

72.75 lbs (33 kg)

Cold-formed steel material

## Features

Locking mechanism enabled

Free-standing unit with 12 individual outlets

Scratch-resisting electrostatic spray coating

Easy-to-view indicator for charging state

Overcharging protection circuit built in

Automatically switch off upon the lamp battery topped up

High-efficiency heat dissipation construction

Easy slide-in design with high-toughness metal shrapnel snapping the cordless headlamp on

AC input of 100-240V  $\pm 10\%$  50-60Hz 2.64/3.60A 137/193W single phase

DC output of 4.8/6.8V 2,000mA in each outlet

6.5 hours charge time with output of 4.8Vdc for Wise Lite 2

5 hours charge time with output of 4.8Vdc for Wisdom Lamp 3 / 4

5.5 hours charge time with output of 6.8Vdc for Wisdom Lamp 6



# NWCR-24BL

SKU # CCJ228

Fast-fill Double Sided Charging Rack for Cordless Headlamp



## Specifications

Width 22.79" (579 mm) \* Depth 9.13" (232 mm) \* Height 39.37" (1,000 mm)

105.82 lbs (48 kg)

Cold-formed steel material

## Features

Locking mechanism enabled

Free-standing unit with 24 individual outlets

Scratch-resisting electrostatic spray coating

Easy-to-view indicator for charging state

Overcharging protection circuit built in

Automatically switch off upon the lamp battery topped up

High-efficiency heat dissipation construction

Easy slide-in design with high-toughness metal shrapnel snapping the cordless headlamp on

AC input of 100-240V  $\pm 10\%$  50-60Hz 5.30/7.20A 272/385W single phase

DC output of 4.8/6.8V 2,000mA in each outlet

6.5 hours charge time with output of 4.8Vdc for Wise Lite 2

5 hours charge time with output of 4.8Vdc for Wisdom Lamp 3 / 4

5.5 hours charge time with output of 6.8Vdc for Wisdom Lamp 6



# NWCR-36BL

SKU # CCJ232

Fast-fill Double Sided Charging Rack for Cordless Headlamp



## Specifications

Width 33.85" (860 mm) \* Depth 9.13" (232 mm) \* Height 39.37" (1,000 mm)  
145.50 lbs (66 kg)

Cold-formed steel material

## Features

Locking mechanism enabled

Free-standing unit with 36 individual outlets

Scratch-resisting electrostatic spray coating

Easy-to-view indicator for charging state

Overcharging protection circuit built in

Automatically switch off upon the lamp battery topped up

High-efficiency heat dissipation construction

Easy slide-in design with high-toughness metal shrapnel snapping the cordless headlamp on

AC input of 100-240V  $\pm 10\%$  50-60Hz 7.90/10.80A 408/577W single phase

DC output of 4.8/6.8V 2,000mA in each outlet

6.5 hours charge time with output of 4.8Vdc for Wise Lite 2

5 hours charge time with output of 4.8Vdc for Wisdom Lamp 3 / 4

5.5 hours charge time with output of 6.8Vdc for Wisdom Lamp 6



# NWCR-60BL

SKU # CCI236

Fast-fill Single Sided Charging Rack for Cordless Headlamp



## Specifications

Width 45.15" (1,147 mm) \* Depth 7.00" (178 mm) \* Height 67.63" (1,718 mm)

279.98 lbs (127 kg)

Cold-formed steel material

## Features

Locking mechanism enabled

Free-standing unit with 60 individual outlets

Single sided with space-saving design

Scratch-resisting electrostatic spray coating

Easy-to-view indicator for charging state

Overcharging protection circuit built in

Automatically switch off upon the lamp battery topped up

High-efficiency heat dissipation construction

Easy slide-in design with high-toughness metal shrapnel snapping the cordless headlamp on

AC input of 100-240V  $\pm 10\%$  50-60Hz 13.20/18.00A 678/960W three phase

DC output of 4.8/6.8V 2,000mA in each outlet

6.5 hours charge time with output of 4.8Vdc for Wise Lite 2

5 hours charge time with output of 4.8Vdc for Wisdom Lamp 3 / 4

5.5 hours charge time with output of 6.8Vdc for Wisdom Lamp 6





# NWCR-120BL

SKU # CCJ237

Fast-fill Double Sided Charging Rack for Cordless Headlamp



## Specifications

Width 45.15" (1,147 mm) \* Depth 13.97" (355 mm) \* Height 67.63" (1,718 mm)

548.95 lbs (249 kg)

Cold-formed steel material

## Features

Locking mechanism enabled

Free-standing unit with 120 individual outlets

Scratch-resisting electrostatic spray coating

Easy-to-view indicator for charging state

Overcharging protection circuit built in

Automatically switch off upon the lamp battery topped up

High-efficiency heat dissipation construction

Easy slide-in design with high-toughness metal shrapnel snapping the cordless headlamp on

AC input of 100-240V  $\pm 10\%$  50-60Hz 26.40/36.00A 1,356/1,920W three phase

DC output of 4.8/6.8V 2,000mA in each outlet

6.5 hours charge time with output of 4.8Vdc for Wise Lite 2

5 hours charge time with output of 4.8Vdc for Wisdom Lamp 3 / 4

5.5 hours charge time with output of 6.8Vdc for Wisdom Lamp 6



# NWCR-204BL

SKU # CCJ238

Fast-fill Double Sided Charging Rack for Cordless Headlamp



## Specifications

Width 72.75" (1,848 mm) \* Depth 13.97" (355 mm) \* Height 67.63" (1,718 mm)  
753.98 lbs (342 kg)

Cold-formed steel material

## Features

Locking mechanism enabled

Free-standing unit with 204 individual outlets

Scratch-resisting electrostatic spray coating

Easy-to-view indicator for charging state

Overcharging protection circuit built in

Automatically switch off upon the lamp battery topped up

High-efficiency heat dissipation construction

Easy slide-in design with high-toughness metal shrapnel snapping the cordless headlamp on

AC input of 100-240V  $\pm 10\%$  50-60Hz 44.90/61.20A 2,305/3,265W three phase

DC output of 4.8/6.8V 2,000mA in each outlet

6.5 hours charge time with output of 4.8Vdc for Wise Lite 2

5 hours charge time with output of 4.8Vdc for Wisdom Lamp 3 / 4

5.5 hours charge time with output of 6.8Vdc for Wisdom Lamp 6



# NWCR-12B

SKU # CCJ040

Fast-fill Double Sided Charging Rack for Cordless Headlamp



## Specifications

Width 11.81" (300 mm) \* Depth 9.13" (232 mm) \* Height 39.37" (1,000 mm)

68.34 lbs (31 kg)

Cold-formed steel material

## Features

Free-standing unit with 12 individual outlets

Scratch-resisting electrostatic spray coating

Easy-to-view indicator for charging state

Overcharging protection circuit built in

Automatically switch off upon the lamp battery topped up

High-efficiency heat dissipation construction

Easy slide-in design with high-toughness metal shrapnel snapping the cordless headlamp on

AC input of 100-240V  $\pm 10\%$  50-60Hz 2.64/3.60A 137/193W single phase

DC output of 4.8/6.8V 2,000mA in each outlet

6.5 hours charge time with output of 4.8Vdc for Wise Lite 2

5 hours charge time with output of 4.8Vdc for Wisdom Lamp 3 / 4

5.5 hours charge time with output of 6.8Vdc for Wisdom Lamp 6



# NWCR-24B

SKU # CCJ044

Fast-fill Double Sided Charging Rack for Cordless Headlamp



## Specifications

Width 22.79" (579 mm) \* Depth 9.13" (232 mm) \* Height 39.37" (1,000 mm)

97 lbs (44 kg)

Cold-formed steel material

## Features

Free-standing unit with 24 individual outlets

Scratch-resisting electrostatic spray coating

Easy-to-view indicator for charging state

Overcharging protection circuit built in

Automatically switch off upon the lamp battery topped up

High-efficiency heat dissipation construction

Easy slide-in design with high-toughness metal shrapnel snapping the cordless headlamp on

AC input of 100-240V  $\pm 10\%$  50-60Hz 5.30/7.20A 272/385W single phase

DC output of 4.8/6.8V 2,000mA in each outlet

6.5 hours charge time with output of 4.8Vdc for Wise Lite 2

5 hours charge time with output of 4.8Vdc for Wisdom Lamp 3 / 4

5.5 hours charge time with output of 6.8Vdc for Wisdom Lamp 6



# NWCR-36B

SKU # CCJ048

Fast-fill Double Sided Charging Rack for Cordless Headlamp



## Specifications

Width 33.85" (860 mm) \* Depth 9.13" (232 mm) \* Height 39.37" (1,000 mm)

136.68 lbs (62 kg)

Cold-formed steel material

## Features

Free-standing unit with 36 individual outlets

Scratch-resisting electrostatic spray coating

Easy-to-view indicator for charging state

Overcharging protection circuit built in

Automatically switch off upon the lamp battery topped up

High-efficiency heat dissipation construction

Easy slide-in design with high-toughness metal shrapnel snapping the cordless headlamp on

AC input of 100-240V  $\pm 10\%$  50-60Hz 7.90/10.80A 408/577W single phase

DC output of 4.8/6.8V 2,000mA in each outlet

6.5 hours charge time with output of 4.8Vdc for Wise Lite 2

5 hours charge time with output of 4.8Vdc for Wisdom Lamp 3 / 4

5.5 hours charge time with output of 6.8Vdc for Wisdom Lamp 6





# NWCR-60B

SKU # CCJ091

Fast-fill Single Sided Charging Rack for Cordless Headlamp



## Specifications

Width 45.15" (1,147 mm) \* Depth 7.00" (178 mm) \* Height 67.63" (1,718 mm)

268.96 lbs (122 kg)

Cold-formed steel material

## Features

Free-standing unit with 60 individual outlets

Single sided with space-saving design

Scratch-resisting electrostatic spray coating

Easy-to-view indicator for charging state

Overcharging protection circuit built in

Automatically switch off upon the lamp battery topped up

High-efficiency heat dissipation construction

Easy slide-in design with high-toughness metal shrapnel snapping the cordless headlamp on

AC input of 100-240V  $\pm 10\%$  50-60Hz 13.20/18.00A 678/960W three phase

DC output of 4.8/6.8V 2,000mA in each outlet

6.5 hours charge time with output of 4.8Vdc for Wise Lite 2

5 hours charge time with output of 4.8Vdc for Wisdom Lamp 3 / 4

5.5 hours charge time with output of 6.8Vdc for Wisdom Lamp 6



# NWCR-120B

SKU # CCJ039

Fast-fill Double Sided Charging Rack for Cordless Headlamp



## Specifications

Width 45.15" (1,147 mm) \* Depth 13.97" (355 mm) \* Height 67.63" (1,718 mm)

504.85 lbs (229 kg)

Cold-formed steel material

## Features

Free-standing unit with 120 individual outlets

Scratch-resisting electrostatic spray coating

Easy-to-view indicator for charging state

Overcharging protection circuit built in

Automatically switch off upon the lamp battery topped up

High-efficiency heat dissipation construction

Easy slide-in design with high-toughness metal shrapnel snapping the cordless headlamp on

AC input of 100-240V  $\pm 10\%$  50-60Hz 26.40/36.00A 1,356/1,920W three phase

DC output of 4.8/6.8V 2,000mA in each outlet

6.5 hours charge time with output of 4.8Vdc for Wise Lite 2

5 hours charge time with output of 4.8Vdc for Wisdom Lamp 3 / 4

5.5 hours charge time with output of 6.8Vdc for Wisdom Lamp 6



# NWCR-204B

SKU # CCJ014

Fast-fill Double Sided Charging Rack for Cordless Headlamp



## Specifications

Width 72.75" (1,848 mm) \* Depth 13.97" (355 mm) \* Height 67.63" (1,718 mm)

709.88 lbs (322 kg)

Cold-formed steel material

## Features

Free-standing unit with 204 individual outlets

Scratch-resisting electrostatic spray coating

Easy-to-view indicator for charging state

Overcharging protection circuit built in

Automatically switch off upon the lamp battery topped up

High-efficiency heat dissipation construction

Easy slide-in design with high-toughness metal shrapnel snapping the cordless headlamp on

AC input of 100-240V  $\pm 10\%$  50-60Hz 44.90/61.20A 2,305/3,265W three phase

DC output of 4.8/6.8V 2,000mA in each outlet

6.5 hours charge time with output of 4.8Vdc for Wise Lite 2

5 hours charge time with output of 4.8Vdc for Wisdom Lamp 3 / 4

5.5 hours charge time with output of 6.8Vdc for Wisdom Lamp 6



# NWCR-12

SKU # CCJ016

Double Sided Charging Rack for Corded Cap Lamp



## Specifications

Width 11.81" (300 mm) \* Depth 9.13" (232 mm) \* Height 39.37" (1,000 mm)  
68.34 lbs (31 kg)  
Cold-formed steel material

## Features

Free-standing unit with 12 individual outlets  
Scratch-resisting electrostatic spray coating  
Easy-to-view indicator for charging state  
Overcharging protection circuit built in  
Automatically switch off upon the lamp battery topped up  
High-efficiency heat dissipation construction  
High-toughness metal shrapnel snapping the headpiece on  
AC input of 100-240V  $\pm 10\%$  50-60Hz 2.30A 115W single phase  
DC output of 4.2V 1,600mA in each outlet  
7.5 hours charge time with output of 4.2Vdc for Wisdom KL5M  
10 hours charge time with output of 4.2Vdc for Wisdom KL8M



# NWCR-24

SKU # CCJ124

Double Sided Charging Rack for Corded Cap Lamp



## Specifications

Width 22.79" (579 mm) \* Depth 9.13" (232 mm) \* Height 39.37" (1,000 mm)

97 lbs (44 kg)

Cold-formed steel material

## Features

Free-standing unit with 24 individual outlets

Scratch-resisting electrostatic spray coating

Easy-to-view indicator for charging state

Overcharging protection circuit built in

Automatically switch off upon the lamp battery topped up

High-efficiency heat dissipation construction

High-toughness metal shrapnel snapping the headpiece on

AC input of 100-240V  $\pm 10\%$  50-60Hz 4.60A 231W single phase

DC output of 4.2V 1,600mA in each outlet

7.5 hours charge time with output of 4.2Vdc for Wisdom KL5M

10 hours charge time with output of 4.2Vdc for Wisdom KL8M





# NWCR-30

SKU # CCJ132

Single Sided Charging Rack for Corded Cap Lamp



## Specifications

Width 45.15" (1,147 mm) \* Depth 7.00" (178 mm) \* Height 67.63" (1,718 mm)

271.16 lbs (123 kg)

Cold-formed steel material

## Features

Free-standing unit with 30 individual outlets

Single sided with space-saving design

Scratch-resisting electrostatic spray coating

Easy-to-view indicator for charging state

Overcharging protection circuit built in

Automatically switch off upon the lamp battery topped up

High-efficiency heat dissipation construction

High-toughness metal shrapnel snapping the headpiece on

AC input of 100-240V  $\pm 10\%$  50-60Hz 5.80A 289W three phase

DC output of 4.2V 1,600mA in each outlet

7.5 hours charge time with output of 4.2Vdc for Wisdom KL5M

10 hours charge time with output of 4.2Vdc for Wisdom KL8M



# NWCR-60

SKU # CCJ134

Double Sided Charging Rack for Corded Cap Lamp



## Specifications

Width 45.55" (1,157 mm) \* Depth 13.97" (355 mm) \* Height 67.63" (1,718 mm)  
451.94 lbs (205 kg)

Cold-formed steel material

## Features

Free-standing unit with 60 individual outlets

Scratch-resisting electrostatic spray coating

Easy-to-view indicator for charging state

Overcharging protection circuit built in

Automatically switch off upon the lamp battery topped up

High-efficiency heat dissipation construction

High-toughness metal shrapnel snapping the headpiece on

AC input of 100-240V  $\pm 10\%$  50-60Hz 11.50A 576W three phase

DC output of 4.2V 1,600mA in each outlet

7.5 hours charge time with output of 4.2Vdc for Wisdom KL5M

10 hours charge time with output of 4.2Vdc for Wisdom KL8M



# NWCR-102

SKU # CCJ136

Double Sided Charging Rack for Corded Cap Lamp



## Specifications

Width 73.11" (1,857 mm) \* Depth 13.97" (355 mm) \* Height 67.63" (1,718 mm)  
621.70 lbs (282 kg)  
Cold-formed steel material

## Features

Free-standing unit with 102 individual outlets  
Scratch-resisting electrostatic spray coating  
Easy-to-view indicator for charging state  
Overcharging protection circuit built in  
Automatically switch off upon the lamp battery topped up  
High-efficiency heat dissipation construction  
High-toughness metal shrapnel snapping the headpiece on  
AC input of 100-240V  $\pm 10\%$  50-60Hz 19.60A 980W three phase  
DC output of 4.2V 1,600mA in each outlet  
7.5 hours charge time with output of 4.2Vdc for Wisdom KL5M  
10 hours charge time with output of 4.2Vdc for Wisdom KL8M



# NWCR-12A

SKU # CCJ120

Fast-fill Double Sided Charging Rack for Corded Cap Lamp



## Specifications

Width 11.81" (300 mm) \* Depth 9.13" (232 mm) \* Height 39.37" (1,000 mm)

68.34 lbs (31 kg)

Cold-formed steel material

## Features

Free-standing unit with 12 individual outlets

Scratch-resisting electrostatic spray coating

Easy-to-view indicator for charging state

Overcharging protection circuit built in

Automatically switch off upon the lamp battery topped up

High-efficiency heat dissipation construction

High-toughness metal shrapnel snapping the headpiece on

AC input of 100-240V  $\pm 10\%$  50-60Hz 3.60A 174W single phase

DC output of 4.56V 2,400mA in each outlet

4 hours charge time with output of 4.56Vdc for Wisdom KL5M

5.5 hours charge time with output of 4.56Vdc for Wisdom KL8M

6.5 hours charge time with output of 4.56Vdc for Wisdom KL12M



# NWCR-24A

SKU # CCJ128

Fast-fill Double Sided Charging Rack for Corded Cap Lamp



## Specifications

Width 22.79" (579 mm) \* Depth 9.13" (232 mm) \* Height 39.37" (1,000 mm)

97 lbs (44 kg)

Cold-formed steel material

## Features

Free-standing unit with 24 individual outlets

Scratch-resisting electrostatic spray coating

Easy-to-view indicator for charging state

Overcharging protection circuit built in

Automatically switch off upon the lamp battery topped up

High-efficiency heat dissipation construction

High-toughness metal shrapnel snapping the headpiece on

AC input of 100-240V  $\pm 10\%$  50-60Hz 7.20A 346W single phase

DC output of 4.56V 2,400mA in each outlet

4 hours charge time with output of 4.56Vdc for Wisdom KL5M

5.5 hours charge time with output of 4.56Vdc for Wisdom KL8M

6.5 hours charge time with output of 4.56Vdc for Wisdom KL12M





# NWCR-30A

SKU # CCJ133

Fast-fill Single Sided Charging Rack for Corded Cap Lamp



## Specifications

Width 45.15" (1,147 mm) \* Depth 7.00" (178 mm) \* Height 67.63" (1,718 mm)

271.16 lbs (123 kg)

Cold-formed steel material

## Features

Free-standing unit with 30 individual outlets

Scratch-resisting electrostatic spray coating

Easy-to-view indicator for charging state

Overcharging protection circuit built in

Automatically switch off upon the lamp battery topped up

High-efficiency heat dissipation construction

High-toughness metal shrapnel snapping the headpiece on

AC input of 100-240V  $\pm 10\%$  50-60Hz 9.00A 432W three phase

DC output of 4.56V 2,400mA in each outlet

4 hours charge time with output of 4.56Vdc for Wisdom KL5M

5.5 hours charge time with output of 4.56Vdc for Wisdom KL8M

6.5 hours charge time with output of 4.56Vdc for Wisdom KL12M





# NWCR-36A

SKU # CCJ284

Fast-fill Double Sided Charging Rack for Corded Cap Lamp

## Specifications

Width 33.85" (860 mm) \* Depth 8.46" (215 mm) \* Height 39.37" (1,000 mm)

136.68 lbs (62 kg)

Cold-formed steel material



## Features

Free-standing unit with 36 individual outlets

Scratch-resisting electrostatic spray coating

Easy-to-view indicator for charging state

Overcharging protection circuit built in

Automatically switch off upon the lamp battery topped up

High-efficiency heat dissipation construction

Easy slide-in design with high-toughness metal shrapnel snapping the headpiece on

AC input of 100-240V  $\pm 10\%$  50-60Hz 16.56A 936W three phase

DC output of 4.65V 4,500mA in each outlet

2 hours charge time with output of 4.65Vdc for Wisdom KL6M

2.5 hours charge time with output of 4.65Vdc for Wisdom KL9M

4 hours charge time with output of 4.65Vdc for Wisdom KL13M



# NWCR-50A

SKU # CCJ285

Fast-fill Single Sided Charging Rack for Corded Cap Lamp



## Specifications

Width 45.15" (1,147 mm) \* Depth 7.00" (178 mm) \* Height 67.63" (1,718 mm)

271.16 lbs (123 kg)

Cold-formed steel material

## Features

Free-standing unit with 50 individual outlets

Single sided with space-saving design

Scratch-resisting electrostatic spray coating

Easy-to-view indicator for charging state

Overcharging protection circuit built in

Automatically switch off upon the lamp battery topped up

High-efficiency heat dissipation construction

Easy slide-in design with high-toughness metal shrapnel snapping the headpiece on

AC input of 100-240V  $\pm 10\%$  50-60Hz 23.00A 1,300W three phase

DC output of 4.65V 4,500mA in each outlet

2 hours charge time with output of 4.65Vdc for Wisdom KL6M

2.5 hours charge time with output of 4.65Vdc for Wisdom KL9M

4 hours charge time with output of 4.65Vdc for Wisdom KL13M



# NWCR-60A

SKU # CCJ160

Fast-fill Double Sided Charging Rack for Corded Cap Lamp



## Specifications

Width 45.55" (1,157 mm) \* Depth 13.97" (355 mm) \* Height 67.63" (1,718 mm)

451.94 lbs (205 kg)

Cold-formed steel material

## Features

Free-standing unit with 60 individual outlets

Scratch-resisting electrostatic spray coating

Easy-to-view indicator for charging state

Overcharging protection circuit built in

Automatically switch off upon the lamp battery topped up

High-efficiency heat dissipation construction

High-toughness metal shrapnel snapping the headpiece on

AC input of 100-240V  $\pm 10\%$  50-60Hz 18.00A 864W three phase

DC output of 4.56V 2,400mA in each outlet

4 hours charge time with output of 4.56Vdc for Wisdom KL5M

5.5 hours charge time with output of 4.56Vdc for Wisdom KL8M

6.5 hours charge time with output of 4.56Vdc for Wisdom KL12M



# NWCR-100A

SKU # CCJ257

Fast-fill Double Sided Charging Rack for Corded Cap Lamp



## Specifications

Width 45.55" (1,157 mm) \* Depth 13.97" (355 mm) \* Height 67.63" (1,718 mm)  
451.94 lbs (205 kg)

Cold-formed steel material

## Features

Free-standing unit with 100 individual outlets

Scratch-resisting electrostatic spray coating

Easy-to-view indicator for charging state

Overcharging protection circuit built in

Automatically switch off upon the lamp battery topped up

High-efficiency heat dissipation construction

Easy slide-in design with high-toughness metal shrapnel snapping the headpiece on

AC input of 100-240V  $\pm 10\%$  50-60Hz 46.00A 2,600W three phase

DC output of 4.65V 4,500mA in each outlet

2 hours charge time with output of 4.65Vdc for Wisdom KL6M

2.5 hours charge time with output of 4.65Vdc for Wisdom KL9M

4 hours charge time with output of 4.65Vdc for Wisdom KL13M



# NWCR-102A

SKU # CCJ137

Fast-fill Double Sided Charging Rack for Corded Cap Lamp



## Specifications

Width 73.11" (1,857 mm) \* Depth 13.97" (355 mm) \* Height 67.63" (1,718 mm)

621.70 lbs (282 kg)

Cold-formed steel material

## Features

Free-standing unit with 102 individual outlets

Scratch-resisting electrostatic spray coating

Easy-to-view indicator for charging state

Overcharging protection circuit built in

Automatically switch off upon the lamp battery topped up

High-efficiency heat dissipation construction

High-toughness metal shrapnel snapping the headpiece on

AC input of 100-240V  $\pm 10\%$  50-60Hz 30.60A 1,470W three phase

DC output of 4.56V 2,400mA in each outlet

4 hours charge time with output of 4.56Vdc for Wisdom KL5M

5.5 hours charge time with output of 4.56Vdc for Wisdom KL8M

6.5 hours charge time with output of 4.56Vdc for Wisdom KL12M

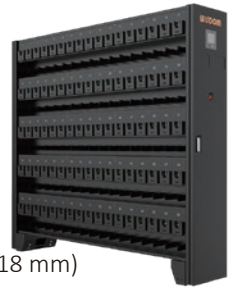




# NWCR-170A

SKU # CCJ279

Fast-fill Double Sided Charging Rack for Corded Cap Lamp



## Specifications

Width 73.11" (1,857 mm) \* Depth 13.97" (355 mm) \* Height 67.63" (1,718 mm)

621.70 lbs (282 kg)

Cold-formed steel material

## Features

Free-standing unit with 170 individual outlets

Scratch-resisting electrostatic spray coating

Easy-to-view indicator for charging state

Overcharging protection circuit built in

Automatically switch off upon the lamp battery topped up

High-efficiency heat dissipation construction

Easy slide-in design with high-toughness metal shrapnel snapping the headpiece on

AC input of 100-240V  $\pm 10\%$  50-60Hz 78.20A 4,420W three phase

DC output of 4.65V 4,500mA in each outlet

2 hours charge time with output of 4.65Vdc for Wisdom KL6M

2.5 hours charge time with output of 4.65Vdc for Wisdom KL9M

4 hours charge time with output of 4.65Vdc for Wisdom KL13M





# NWFR-5A

SKU # CCJ270

Fast-fill Desktop & Wall-mounted Charging Rack for Flashlight



## Specifications

Width 18.543" (471 mm) \* Depth 7.087" (180 mm) \* Height 1.850" (47 mm)

6.61 lbs (3 Kg)

Cold-formed steel material

## Features

Desktop & wall-mounted unit with 5 individual outlets

Scratch-resisting electrostatic spray coating

Easy-to-view indicator for charging state

Overcharging protection circuit built in

Automatically switch off upon the flashlight battery topped up

High-efficiency heat dissipation construction

Easy plug-in design with high-toughness metal shrapnel snapping the flashlight on

AC input of 100-240V  $\pm 10\%$  50-60Hz 2.45A 128W single phase

DC output of 4.2V 5,000mA in each outlet

4 hours charge time with output of 4.2Vdc for Wisdom Aurora Pro



# NWBR-8A SKU # CCJ289

Fast-fill Desktop Charging Rack for  
Personal Safety Strobe Light & Industrial Safety Headlamp



## Specifications

Length 11.81" (300 mm) \* Depth 7.01" (178 mm) \* Height 1.18" (30 mm)

2.54 lbs (1.15 kg)

Cold-formed steel material

## Features

Desktop unit with 8 individual outlets

Easy-to-view indicator for charging state

Overcharging protection circuit built in

Automatically switch off upon the light battery topped up

High-efficiency heat dissipation construction

Easy absorption design with high-toughness metal contact snapping the light on

AC input of 100-240V  $\pm 10\%$  50-60Hz 0.40A 20.1W single phase

DC output of 5V 440mA in each outlet

2 hours charge time with output of 5Vdc for Wisdom Pharos 7

2 hours charge time with output of 5Vdc for Wisdom Duplex

3 hours charge time with output of 5Vdc for Wisdom ELF



# NWBR-144A SKU # ECJ132

Fast-fill Single Sided Charging Rack for  
Personal Safety Strobe Light & Industrial Safety Headlamp



## Specifications

Width 45.51" (1,156 mm) \* Depth 6.81" (173 mm) \* Height 67.64" (1,718 mm)

271.17 lbs (123 kg)

Cold-formed steel material

## Features

Free-standing unit with 144 individual outlets

Single sided with space-saving design

Scratch-resisting electrostatic spray coating

Easy-to-view indicator for charging state

Overcharging protection circuit built in

Automatically switch off upon the light battery topped up

High-efficiency heat dissipation construction

Easy absorption design with high-toughness metal contact snapping the light on

AC input of 100-240V  $\pm 10\%$  50-60Hz 4.00A 241W single phase

DC output of 5V 300mA in each outlet

2 hours charge time with output of 5Vdc for Wisdom Pharos 7

2 hours charge time with output of 5Vdc for Wisdom Duplex

3 hours charge time with output of 5Vdc for Wisdom ELF







**BUILDING A  
WORLD-CLASS  
BRAND**

**WISDOM**

